



CE

RANDOX

Evidence

Multiplexing...Proven, Perfected, Evolved
The World's First Protein Biochip Array Technology System



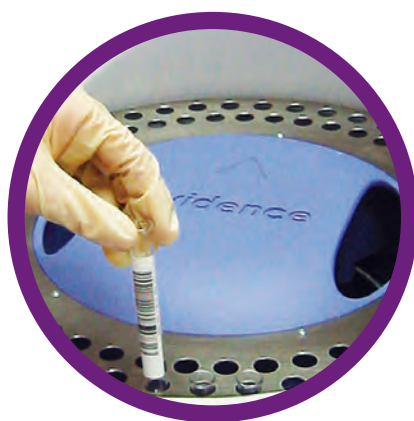
Evidence

*Unrivalled benefits for batch analysis
in the larger laboratory*

The Evidence analyser is the world's first protein Biochip Array Technology system and has truly revolutionised laboratory diagnostics worldwide. As the first of its kind, the Evidence brings higher standards of quality, efficiency and reliability.

Utilising Biochip Array Technology, the Evidence allows simultaneous detection of multiple analytes from a single sample for efficient and cost effective testing. Suited to the larger laboratory with a throughput of >1500 tests per hour, the Evidence provides laboratories with innovative, intuitive technology.

Evidence system overview



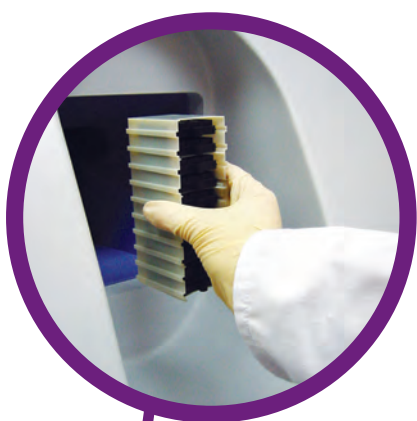
(B) Sample unit

(A) Bulk solutions unit



The Evidence analyser is a fully automated immunoanalyser using protein Biochip Array Technology and is suitable for use in a wide range of settings including:

- Hospital laboratories
- Clinical laboratories
- Private/Public sector research applications
- Veterinary laboratories
- Forensic and clinical toxicology
- Pharmaceutical/CRO applications



Ⓒ Cassette loading tower



Ⓓ Refrigerated reagent storage unit



Ⓔ Biohazard waste unit

Ⓕ Cassette collection unit

Why Evidence?

High quality multiplexing for reliable results

Save time - save costs

- Multiplex testing allows multiple tests to be carried out from a single patient sample reducing the amount of time and labour spent on individual tests

Optimum laboratory efficiency

- Multi-analyte barcoded controls and calibrators available for accurate and reliable laboratory testing
- Fully automated system, maximising walk-away time allowing staff to dedicate more time to other important duties
- Refrigerated reagent storage unit

Complete patient profiling

- Multiplex testing with Biochip Array Technology allows clinicians to consider the complete picture
- Facilitating well informed decisions and accurate diagnosis



High throughput

- The Evidence analyser has the ability to process >1500 tests per hour

Quality results

- Extensive QC capabilities with multi-analyte controls and calibrators available
- QC software with multi-rule capability
- Complete IQC and EQA packages available



Reduced sample volume

- Analyse a complete profile of biomarkers from as little as 7µl of sample
- Saves time and patient distress

Applicable to multiple matrices

- The system is applicable to the analysis of multiple matrices, increasing the flexibility and utility of the Evidence. Matrices include serum, plasma, whole blood, oral fluid, urine and forensic matrices. New tests and matrices are constantly in development

World's most diverse test menu

- More tests available than any other sole supplier
- Routine and novel markers available

Result traceability

- Chain of custody features
- Barcoded reagents and calibrators

Software

Reliable and user friendly operations

Current User: [Sample Entry] [Result History] [Head Office] [Archiving] [Samples On Board] [Calibration Entry] [Calibration History] [Unit Selection] [Reflex Testing] [QC] [LIMS] [Login] [Close] 05:08:19 PM

Sample Entry - MultiPanel

Position	Sample Code	Panel	T/C
1	No Code	DOA	
2	No Code	DOA	
3	No Code	DOA	
4	No Code	DOA	
5	No Code	DOA	
6	No Code	DOA	
7	No Code	DOA	
8	No Code	DOA	
9	No Code	DOA	
10	No Code	DOA	
11	No Code	DOA	
12	No Code	DOA	
13	No Code	DOA	
14	No Code	DOA	
15	No Code	DOA	
16	No Code	DOA	
17	No Code	DOA	
18	No Code	DOA	
19	No Code	DOA	
20	No Code	DOA	
21	No Code	DOA	
22	No Code	DOA	
23	No Code	DOA	
24	No Code	DOA	
25	No Code	DOA	
26	No Code	DOA	
27	No Code	DOA	
28	No Code	DOA	
29	No Code	DOA	
30	No Code	DOA	
31	No Code	DOA	
32	No Code	DOA	
33	No Code	DOA	
34	No Code	DOA	
35	No Code	DOA	
36	No Code	DOA	
37	No Code	DOA	

Batch Entry: [v] Panel Type: DRUGS OF ABUSE Start position: 1 samples: 90 [Add Samples]

Profile Selection: Profile: Profile 1

Report	Analyte	Cut Off
<input checked="" type="checkbox"/>	METHAMPHETAMINE	1000
<input checked="" type="checkbox"/>	BENZODIAZEPINE	180
<input checked="" type="checkbox"/>	METHADONE	300
<input checked="" type="checkbox"/>	PCP	25
<input checked="" type="checkbox"/>	CREATININE	20
<input checked="" type="checkbox"/>	AMPHETAMINE	1000
<input checked="" type="checkbox"/>	BARBITURATE	300
<input checked="" type="checkbox"/>	LORAZEPAM	200
<input checked="" type="checkbox"/>	OPiate	2000
<input checked="" type="checkbox"/>	BZG	300
<input checked="" type="checkbox"/>	THC	50

[Apply To Samples] [New Profile] [Modify Profile] [Cancel]

Active Sample Ring

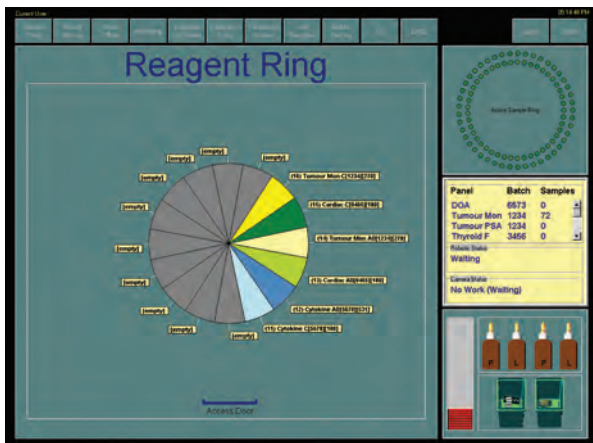
Panel Batch Samples

DOA	6573	0
Tumour Mon	1234	72
Tumour PSA	1234	0
Thyroid F	3456	0

Robotic Status: Waiting

Camera Status: No Work (Waiting)

Accept Ring



Extensive QC capabilities

- Internal QC software included with Levey Jennings charts, multi-point QC rules and auto flagging of outliers

Connectivity

- LIMS integrated for convenient reporting
- Two disc drives; hard drive and DVD-RW drive
- USB connection

Retrospective reporting

- Allows the user to retrieve previously unreported tests
- Reduces reagent wastage
- Saves time and labour costs

Simplicity

- Minimal training required
- Highly intuitive graphical user interface
- Colour-coded on screen inventory units to show component status
- Automatic system initialisation procedure
- Audible alarms to alert user
- Calibrator information supplied on disc for easy upload

Flexibility

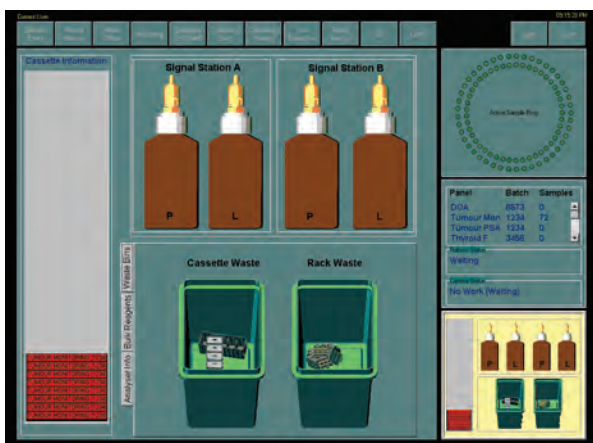
- User defined cut-off values for all toxicology assays
- Multi-format option for results review e.g.: by patient, by array, by date etc
- Fully printable reports

Security

- Full traceability of data
- Password protection for different levels of access

Storage facilities

- Store up to 20,000 sample results
- Store up to 500,000 sample test results



Biochip test menu

The world's largest and most diverse test menu

Clinical Arrays

Cardiac Array

Creatine-Kinase Muscle Brain (CK-MB)
Heart Type Fatty Acid Binding Protein (H-FABP)
Myoglobin(Myo)
Troponin I (cTnI)

Thyroid Total Array

Thyroid Stimulating Hormone (TSH)
Total Thyroxine (TT4)
Total Tri-iodothyronine (TT3)

Estradiol (EST)
Follicle Stimulating Hormone (FSH)
Luteinising Hormone (LH)
Progesterone (PROG)
Prolactin (PRL)
Testosterone (TEST)

Free Thyroxine (FT4)
Free Tri-iodothyronine (FT3)
Thyroid Stimulating Hormone (TSH)

Tumour PSA Array

Carcinoembryonic Antigen (CEA)
Free Prostate Specific Antigen (fPSA)
Total Prostate Specific Antigen (tPSA)

Fertility Hormone Array

Additional Tests

Anti-Tg
Anti-TPO
Beta Crosslaps
B-HCG
CA 125
CA 15-3
CA 19-9
Carbamazepine
Digitoxin
Digoxin

Thyroid Free Array

Folate
Gentamicin
Growth hormone
Intact PTH
Methotrexate
Osteocalcin
Phenobarbital
Phenytoin
Sex Hormone-Binding Globulin (SHBG)
Thyroglobulin (Tg)

Theophylline
Tobramycin
Valproic Acid
Vancomycin
Vitamin B12
Vitamin D
CAIII
GPBB

Applications available for serum and/or plasma

Research Arrays

Adhesion Molecules Array

E-Selectin
L-Selectin
P-Selectin
Intercellular Adhesion Molecule-1 (ICAM-1)
Vascular Cell Adhesion Molecule-1 (VCAM-1)

Cerebral Array I

Brain-Derived Neurotrophic Factor (BDNF)
Glial Fibrillary Acidic Protein (GFAP)
Heart Type Fatty Acid Binding Protein (H-FABP)
Interleukin-6 (IL-6)

Cerebral Array II

C-Reactive Protein (CRP)
D-dimer
Neuron Specific Enolase (NSE)
Neutrophil Gelatinase-Associated Lipocalin (NGAL)
Soluble Tumour Necrosis Factor Receptor I (sTNFRI)

Cytokine Array I

Epidermal Growth Factor (EGF)
Interferon- γ (IFN- γ)
Interleukin-1 α (IL-1 α)
Interleukin-1 β (IL-1 β)
Interleukin-2 (IL-2)
Interleukin-4 (IL-4)
Interleukin-6 (IL-6)
Interleukin-8 (IL-8)
Interleukin-10 (IL-10)
Monocyte Chemotactic Protein-1 (MCP-1)
Tumour Necrosis Factor- α (TNF- α)
Vascular Endothelial Growth Factor (VEGF)
(High sensitivity Array on Evidence Investigator only)

Cytokine Array II

Eotaxin
Insulin like Growth Factor I, Free (IGF-I (free))
Interleukin-1 Receptor Antagonist (IL-1Ra)
Interleukin-12/23-p40 (IL-12/23-p40)
Interferon- γ -Inducible Protein 10 (IP-10)
Platelet Derived Growth Factor BB (PDGF-BB)
Regulated on Activation, Normal T Expressed and Secreted (RANTES)

Cytokine Array III

Granulocyte Macrophage Colony Stimulating Factor (GM-CSF)
Interleukin-5 (IL-5)
Interleukin-15 (IL-15)
Macrophage Inflammatory Protein - 1 α (MIP-1 α)

Cytokine Array IV

Matrix Metalloproteinase-9 (MMP-9)
Soluble IL-2 Receptor α (sIL-2R α)
Soluble IL-6 Receptor (sIL-6R)
Soluble Tumour Necrosis Factor Receptor I (sTNFRI)
Soluble Tumour Necrosis Factor Receptor II (sTNFRII)

Cytokine Array V (On Evidence Investigator only)

Interleukin-3 (IL-3)
Interleukin-7 (IL-7)
Interleukin-13 (IL-13)
Interleukin-12p70 (IL-12p70)
Interleukin-23 (IL-23)

Endocrine Array

Cortisol
Dehydroepiandrosterone Sulphate (DHEAs)
Leptin
17 α Hydroxyprogesterone

Metabolic Syndrome Array I

Ferritin
Insulin
Interleukin-6 (IL-6)
Leptin
Plasminogen Activator Inhibitor-1 (PAI-1)
Resistin
Tumour Necrosis Factor- α (TNF α)

Metabolic Syndrome Array II

Adiponectin
C-Reactive Protein (CRP)
Cystatin C

Tumour Array 3 (Monitoring)

Alpha-Fetoprotein (AFP)
Carcinoembryonic Antigen (CEA)
Human Chorionic Gonadotropin (hCG)

Applications available for serum and/or plasma

Molecular Arrays available on Evidence Investigator only

Respiratory Pathogen Array

Influenza A
Influenza B
Human adenovirus B/C/E
Human bocavirus 1/2/3
Human coronavirus 229E/NL63
Human coronavirus OC43/HKU1
Human enterovirus A/B/C
Human metapneumovirus
Human parainfluenza virus 1
Human parainfluenza virus 2
Human parainfluenza virus 3
Human parainfluenza virus 4

Human respiratory syncytial virus A
Human respiratory syncytial virus B
Human rhinovirus A/B
Chlamydomphila pneumoniae
Haemophilus influenza
Legionella pneumophila
Moraxella catarrhalis
Mycoplasma pneumoniae
Staphylococcus aureus
Streptococcus pneumoniae

STI Array

Chlamydia trachomatis
Neisseria gonorrhoea
Herpes simplex 1
Herpes simplex 2
Treponema pallidum
Trichomonas vaginalis
Mycoplasma hominis
Mycoplasma genitalium
Ureaplasma urealyticum
Haemophilus ducreyi

K-RAS/BRAF/PIK3CA* Array

K-RAS
BRAF
PIK3CA*

Cardiac Risk Prediction Array

Familial Hypercholesterolemia Array

*Applications for a wide range of matrices
PIK3CA for research use only

Toxicology Arrays

Drugs of Abuse Array I Plus

Amphetamine
Barbiturates
Benzodiazepine 1
Benzodiazepine 2
Buprenorphine
Cannabinoids
Cocaine metabolite (Benzoylcegonine)
MDMA
Methadone
Methamphetamine
Opiates
Phencyclidine
Tricyclic Antidepressants (TCAs Generic)

Drugs of Abuse Array III

Chloral Hydrate Metabolite
Ethyl Glucuronide
Fentanyl
Ketamine Metabolite
Meperidine
Meprobamate
Zaleplon
Zolpidem
Zopiclone
Flunitrazepam

Drugs of Abuse Array IV

Acetaminophen
Dextromethorphan
Escitalopram
Ethyl Glucuronide
Fluoxetine
Haloperidol
Ibuprofen
Methylphenidate
Salicylate
Sertraline
Tramadol
Trazodone
Tricyclic Antidepressants (TCAs Generic)

Drugs of Abuse Array V

Bath Salts I (Methcathinone + Mephedrone)
Bath Salts II (MDPV)
Benzylpiperazines
Mescaline
Phenylpiperazines I
Phenylpiperazines II
Salvinorin
Synthetic Cannabinoids I
Synthetic Cannabinoids II
Synthetic Cannabinoids III
Synthetic Cannabinoids IV

Drugs of Abuse Array II

Buprenorphine
Fentanyl
Generic Opioids
Ketamine
LSD
Methaqualone
MDMA
Oxycodone 1
Oxycodone 2
Propoxyphene

*Applications available for urine, whole blood, oral fluid and a wide
range of forensic matrices.
(For urine applications creatinine is included as a dilution marker)*

Food Diagnostics Arrays on Evidence Investigator only

Anthelmintics Array

Amino-benzimidazoles
Avermectins
Benzimidazoles
Levamisole
Moxidectin
Thiabendazole
Triclabendazole

Anti-Microbial Array I Plus

Sulphachlorpyridazine
Sulphadiazine
Sulphadimethoxine
Sulphadoxine
Sulphamerazine
Sulphamethazine
Sulphamethizole
Sulphamethoxazole
Sulphamethoxypyridazine
Sulphamonomethoxine
Sulphapyridine
Sulphaquinoxaline
Sulphathiazole
Sulphisoxazole
Trimethoprim

Anti-Microbial Array II

Ceftiofur
Quinolones (generic)
Florfenicol/Thiamphenicol
Streptomycin/Dihydrostreptomycin
Tetracyclines (generic)
Tylosin/Tilmicosin

Anti-Microbial Array III

AHD
AMQZ
AOZ
Chloramphenicol
SEM

Anti-Microbial Array III (Chloramphenicol only)

Chloramphenicol
Chloramphenicol Glucuronide

Anti-Microbial Array IV

Amikacin
Apramycin
Bacitracin
Clindamycin
Desmucosin
Erythromycin
Gentamicin
Hygromycin
Josamycin
Kanamycin
Lincomycin
Neomycin
Paromomycin
Pirlimycin
Spectinomycin
Spiramycin
Streptomycin
Tobramycin
Tylosin
Virginiamycin

Coccidiostats Array

Amprolium
Clopidol
Decoquinat
Diclazuril
Halofuginone
Imidocarb
Lasalocid
Maduramicin
Monensin
Nicarbazin
Nifursol
Robenidine
Salinomycin/Narasin
Semduramicin
Toltrazuril

Growth Promoter Multiple Matrix Screen Array

β-agonists
Boldenone
Corticosteroids
Nandrolone
Ractopamine
Stanozolol
Stilbenes
Trenbolone
Zeranol

Growth Promoter Rapid Urine

Screen Array

β-agonists
Boldenone
Corticosteroids
Ractopamine
Stanozolol
Trenbolone
Zeranol

Synthetic Steroids Array

Ethinylestradiol
Gestagens
Methyltestosterone
17β - Clostebol

Beta Lactam Antibiotics Array

For the quantitative detection of
Ampicillin, Amoxicillin, Cloxacillin,
Dicloxacillin, Nafcillin, Oxacillin,
Penicillin G, Penicillin V, Cefacetril,
Cefazolin, Cefoperazone, Cefquinome,
Ceftiofur, Cephalixin, Cephalonium,
Cephapirin.

*Applications available for feed, honey, milk,
urine, tissue, egg, seafood*

Unrivalled customer service

Our global network, ensuring local support

Local Support

At Randox, we realise the importance of local support. Our global team of expert technical and applications staff ensure unbeatable customer service wherever you are in the world.

Time is critical in any laboratory, therefore you are our top priority. Dedicated specialists answer all your queries in a quick and thorough manner. With our field engineers on hand at any time, you can be sure of a fast response anywhere in the world.

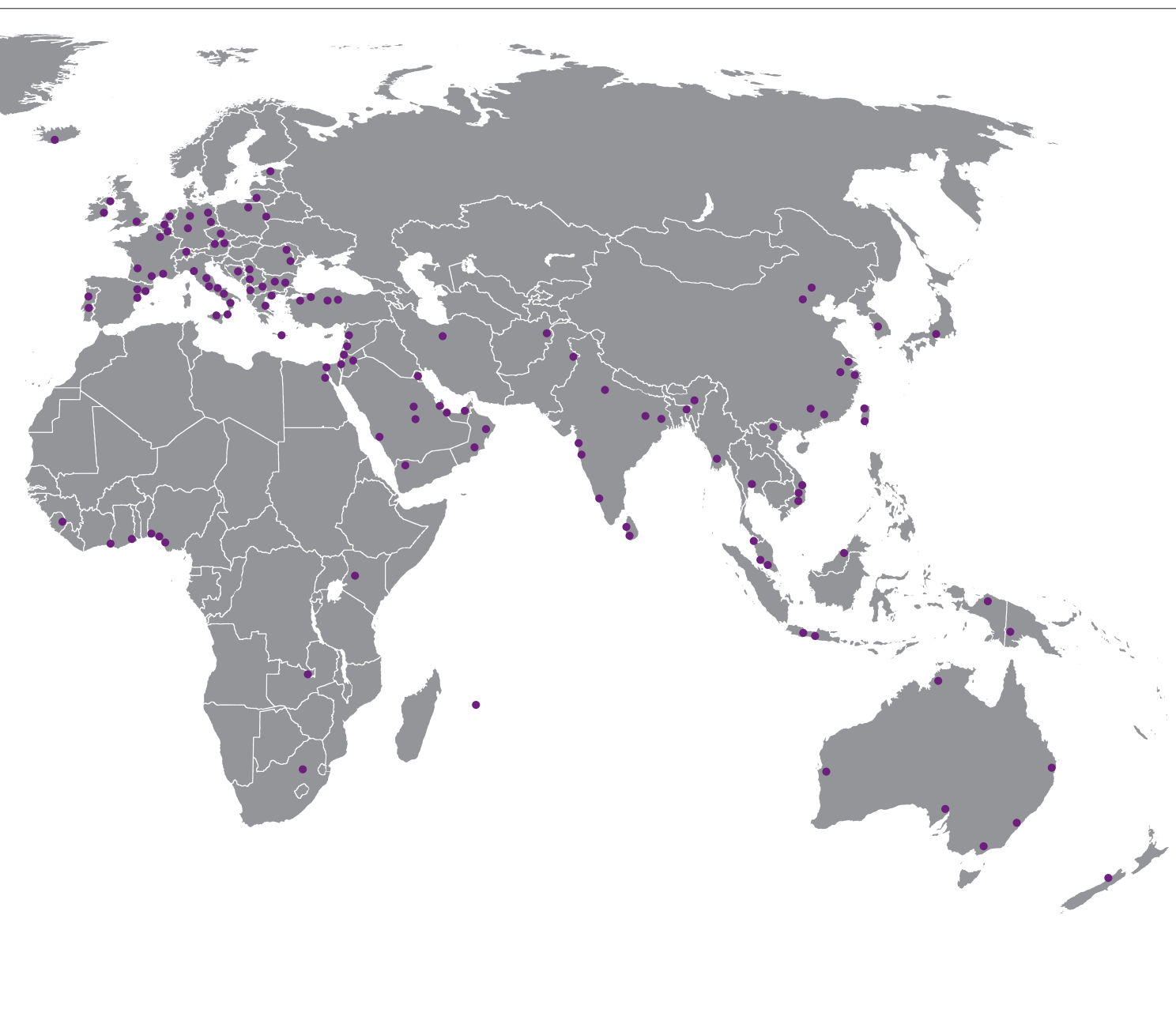
Remote Access Diagnostics

Our ground-breaking 'Remote Access Diagnostics' allows immediate support of your system wherever, whenever, reducing downtime and ensuring you are operational as soon as possible.

Randox is committed to the smooth running of your laboratory, from the provision of quality products to unequalled customer support. We can access, diagnose and resolve many queries without the time and costs associated with call outs.



email: biochip.support@randox.com



Evolution of Evidence

A proven technology has evolved

First of a kind for reliable multiplex testing within clinical, veterinary, forensic, research and pharmaceutical testing

Biochip Array Technology, a revolution in immunoassay technology, has evolved continuously over the years, giving the world accurate, high quality results faster and more efficiently than any previous method. It enables clinicians and investigators to see the full picture with complete test profiles, whilst reducing labour, time and costs. Together



Evidence Investigator

The Evidence Investigator brought Biochip Array Technology within reach of the smaller laboratory and extended the test menu to include molecular arrays.



Evidence

The original high throughput Evidence analyser still brings unrivalled benefits for batch analysis in the larger laboratory.

the technology and the analysers have evolved to allow application in fields as varied as clinical diagnostics, forensic toxicology, veterinary, pharmaceutical, food diagnostics, research and many more. Randox is committed to constant research and development, ensuring that you remain at the cutting edge of laboratory medicine.



Evidence Evolution

The Evidence Evolution is the world's first Random Access biochip testing platform, with advanced STAT testing capabilities.

Specifications

Physical Dimensions

Height	1.7m
Depth	1.0m
Width	2.0m
Weight (TBC)	605kg (approx)

Performance Characteristics

Accreditation	Accredited to CE, UL and ISO 9001 certification
Analyser Description	Automated biochip array analyser
Biochip Capacity	360 biochips
Biochip Format	Biochip carrier holds 9 individual biochips
Calibration Method	4-parameter curve fit
Connectivity	LIMS integration
Data Back-Up Methods	Floppy disc drive, hard drive and CD ROM drive
Environment	Operating temperature 16 to 30°C Relative Humidity < 80% Altitude < 2000m Pollution degree 2 (IEC 664)
Incubation Time	30-60 minutes (Array specific)
Installation Requirements	Evidence must be connected to a three-wire power supply with a safety ground
Measurement Principal	Competitive, Sandwich and Antibody Capture techniques with Chemiluminescent reaction
Peripherals	PC, printer, mouse, imaging software
Quality Control	Levey-Jennings, user definable multipoint rules
Reagent Volume	Array specific, supplied in kits
Sample Capacity	Up to 180 samples
Sample Loading	Continuous sample loading
Sample Throughput	Up to 1500 tests per hour (Array specific)
Sample Type	Serum, plasma, urine, whole blood, oral fluid (Array specific)
Sample Volume	7 - 150µl per biochip
Start Up / Shut Down Time	15 minutes / 10 minutes
Time to First Result	From 55 minutes (Array specific)

Power Requirements

Supply Voltage	Power unit source: AC 120V 16A(Max.)/AC 240V 6A(Max.)	
	N.America	120V, 60Hz
	Rest of World	230V, 50Hz
	Power consumption	1500W
UPS	Optional	

Water Requirements

Water Quality	CLSI Type II or better
---------------	------------------------

Catalogue No. / Ordering details

Evidence Analyser	EV3600
-------------------	--------



Australia

Randox (Australia) Pty Ltd.

Suite 2/4 Charles Street,
Paramatta, NSW 2150, Australia.
Tel: +61 (0) 2 9615 4640
Fax: +61 (0) 2 9615 4644



Brazil

Randox Brasil Ltda

Rua Fernandes Moreira, 415
CEP: 04716-000 - São Paulo / SP - Brasil.
Tel: +55 11 5181-2024
Fax: +55 11 5181-0817



China

Randox Laboratories Ltd.

Shanghai Representative Office

Room 522-523, Fortune Times Tower, No.1438 North,
Shanxi Road, Putuo District, Shanghai, China 20060
Tel: +86 021 6288 6240
Fax: +86 021 6288 6246
www.randox.cn



Czech Republic

Randox Laboratories s.r.o.

Bořivojova 35/878
130 00 Praha 3, Czech Republic.
Tel: +420 2 1115 1661
Fax: +420 2 1115 1662



France

Laboratoires Randox

Roissy Parc, ZAC du Moulin
24-26 rue du Noyer, BP 40, 95700 Roissy en France
Tel: +33 (0) 130 18 96 80
Fax: +33 (0) 130 18 03 60
www.randox.fr



Germany

Randox Laboratories GmbH

Wilhelmstr. 147a, 42489 Wülfrath, Germany.
Tel: +49 (0) 2151/93 706-11
Fax: +49 (0) 32 211089 91626



Hong Kong

Randox Laboratories Hong Kong

Room 602, Skyline Commercial Centre,
No 71-77 Wing Lok Street, Sheung Wan, Hong Kong
Tel: +852 3595 0515
Fax: +852 3008 5133



India

Randox Laboratories India Pvt Ltd.

3rd Floor, Godrej Coliseum, Somaiya Hospital Road,
Off. Eastern Express Highway, Sion (East), Mumbai - 400 022, India
Tel: +91 22 6714 0600
Fax: +91 22 2408 3803



India

Randox Laboratories India Pvt Ltd.

Plot 191-195, Bommasandra, Jigni Link Road Industrial Area,
Bangalore, 562106
Tel: +91 80 2802 5000
Fax: +91 80 2802 5012



Italy

Randox Laboratories Ltd.

Corso Palestro 10,
10122 Torino, Italy.
Tel: +39 06 9896 8954
Fax: +39 06 6051 3810



Poland

Randox Laboratories

ul. Wolnosc 7 lok. 15, 01-018, Warszawa.
Tel: +48 (0) 22 862 1080
Fax: +48 (0) 22 862 1081
www.randox.pl



Portugal

Irandox Laboratorios Quimica Analitica Ltda

Rua Agostinho de Jesus e Sousa 258,
4000-015 Porto, Portugal.
Tel: +351 22 589 8320
Fax: +351 22 589 8329



Puerto Rico

Clinical Diagnostics of Puerto Rico, LLC

PMB 590 PO Box 29029 San Juan,
PR 00929-0029.
Tel: +1 787 701 7000
Fax: +1 787 701 6901



Republic of Ireland

Randox Teoranta

Meenmore, Dungloe,
Co Donegal, Republic of Ireland
Tel: +353 7495 22600



Slovakia

Randox S.R.O.

Vilová 2, 851 01 Bratislava, Slovakia.
Tel: +421 2 6381 3324
Fax: +421 2 6381 2482



South Africa

Randox Laboratories (SA) (PTY) Ltd

Unit 69F Allandale Business Park
Cnr. Le Roux Avenue & Morkels Close
Halfway House, Midrand, South Africa
Tel: +27 (0) 11 312 3590
Fax: +27 (0) 11 312 4146



South Korea

Randox Korea Ltd.

904 Doosan Venturetime 126-1, Pyeongchon,
Dongan-gu, Anyang City, Kyeonggi-do, South Korea
Tel: +82 (0) 31 478 3121
Fax: +82 (0) 31 478 3122
www.randoxkorea.com



Spain

Laboratorios Randox S.L.

C/Enric Prat de la Riba, 226, 1º Planta,
08901 L'Hospitalet de Llobregat, Barcelona.
Tel: +34 93 475 09 64
Fax: +34 93 475 09 65



Switzerland

Randox Laboratories Ltd. (Switzerland)

C/O Wirtschafts-Treuhand Auctor Schwyz AG,
Oberer Steisteg 18, 6430 Schwyz, Switzerland.
Tel: +41 41 810 48 89
Fax: +41 (0)41 560 81 41



UK

Randox Laboratories Ltd.

55 Diamond Road, Crumlin, Co. Antrim,
United Kingdom, BT29 4QY
Tel: +44 (0) 28 9442 2413
Fax: +44 (0) 28 9445 2912



USA

Randox Laboratories-US, Ltd.

515 Industrial Boulevard,
Kearneysville, West Virginia, 25430
Tel: +1 304 728 2890 Toll Free: 8664 RANDOX
Fax: +1 304 728 1890 Toll Free: 8664 RANDOX I



Vietnam

Randox Laboratories Ltd. Vietnam

Villa Phuc Thinh 2Bis Nguyen Thi Minh Khai St.
Dakao Ward, District 1, Ho Chi Minh City, Vietnam.
Tel: +84-8-39 11 09 04
Fax: +84-8-39 11 09 05

RANDOX

Randox Laboratories Limited, 55 Diamond Road, Crumlin, County Antrim, BT29 4QY, United Kingdom

T +44 (0) 28 9442 2413 F +44 (0) 28 9445 2912 E marketing@randox.com I www.randox.com

Information correct at time of print. All Randox products are made in the UK.

Randox Laboratories Limited is a company registered within Northern Ireland with company number NI. 15738. VAT Registered Number: GB 353 030 400. Product availability may vary from country to country. Please contact your local Randox representative for information.



LT089 PART 15