

**Interleukin 1 $\beta$**

**Human, Recombinant, *E. coli***

<b>Cat. No.:</b>	RCP9288	<b>Size:</b>	10 $\mu$ g
	RCP9289		100 $\mu$ g
	RCP9129		1000 $\mu$ g

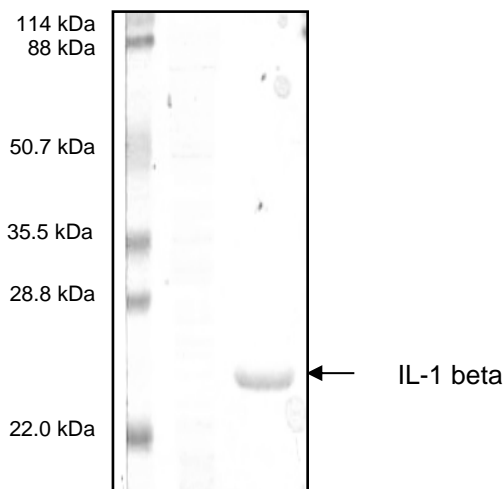
**Synonym:** IL-1B; IL-1 $\beta$  ; IL-1 beta; interleukin-1beta; IL1F2; catabolin

**Description:** Interleukin 1 $\beta$  is a potent pro-inflammatory cytokine produced by a wide variety of cell types including monocytes and macrophages. It displays a broad range of biological activity including activation of B and T cells in response to inflammation and the activation of endothelial cells.

**RANDOX** recombinant IL-1 $\beta$ -chain comprises a 153 amino acid fragment (117-269) corresponding to the mature IL-1 $\beta$  chain and is expressed in *E. coli* with an amino-terminal hexahistidine tag. This product is for research use only and is not intended for diagnostic or therapeutic use.

**Form:** Liquid

**Purity:** >95% by SDS-PAGE



**References:** Dinarello, C.A. (2002) *Clin. Exp. Rheumatol.* **20(5 s.27):** S1-13