

**LP-PLA2**

**Human, Recombinant, *E. coli***

<b>Cat. No.:</b>	RCP9439	<b>Size:</b>	10µg
	RCP9440		100µg
	RCP9441		1000µg

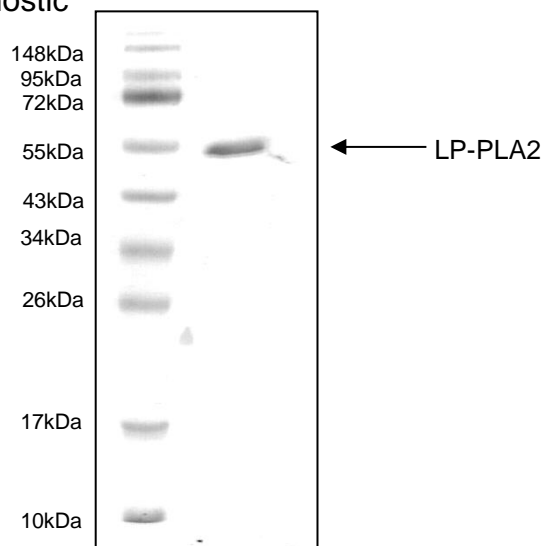
**Synonym:** Lipoprotein-Associated Phospholipase A2; Phospholipase A2; Group VIII; PLA2G7; Platelet-Activating Factor Acetylhydrolase; PAFAH; LDL-Associated Phospholipase A2; LDL-PLA(2); 2-acetyl-1-alkylglycerophosphocholine esterase

**Description:** LP-PLA2 is an enzyme produced by inflammatory cells and hydrolyzes oxidised phospholipids in low-density lipoprotein (LDL). In the blood, it travels mainly with LDL and less than 20% is associated with high-density lipoprotein. LP-PLA2 is involved in the development of atherosclerosis and is a marker for cardiac disease.

**RANDOX** recombinant LP-PLA2 comprises a 420 amino acid fragment (22-441) corresponding to the mature LP-PLA2 protein and is expressed in *E. coli* with an amino-terminal hexahistidine tag. This product is for research use only and is not intended for diagnostic or therapeutic use.

**Form:** Liquid

**Purity:** >95% by SDS-PAGE



**References:** Zalewski A. *et al* (2005) *Arteriosclerosis, Thrombosis, and Vascular Biology* **25** : 923.

Mohler E.R. *et al* (2008) *Journal of American College of Cardiology* **51** : 1632-1641.